

Stock Code: **MHU25015030-DP**

MHU25015030-DP 2.5 x 1.5 x 762 Ultra

STAMPING DETAILS:

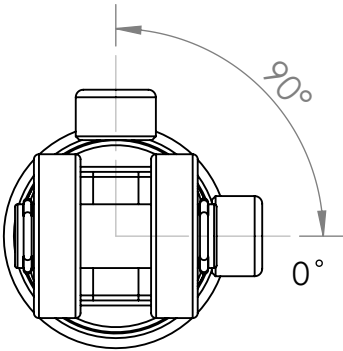
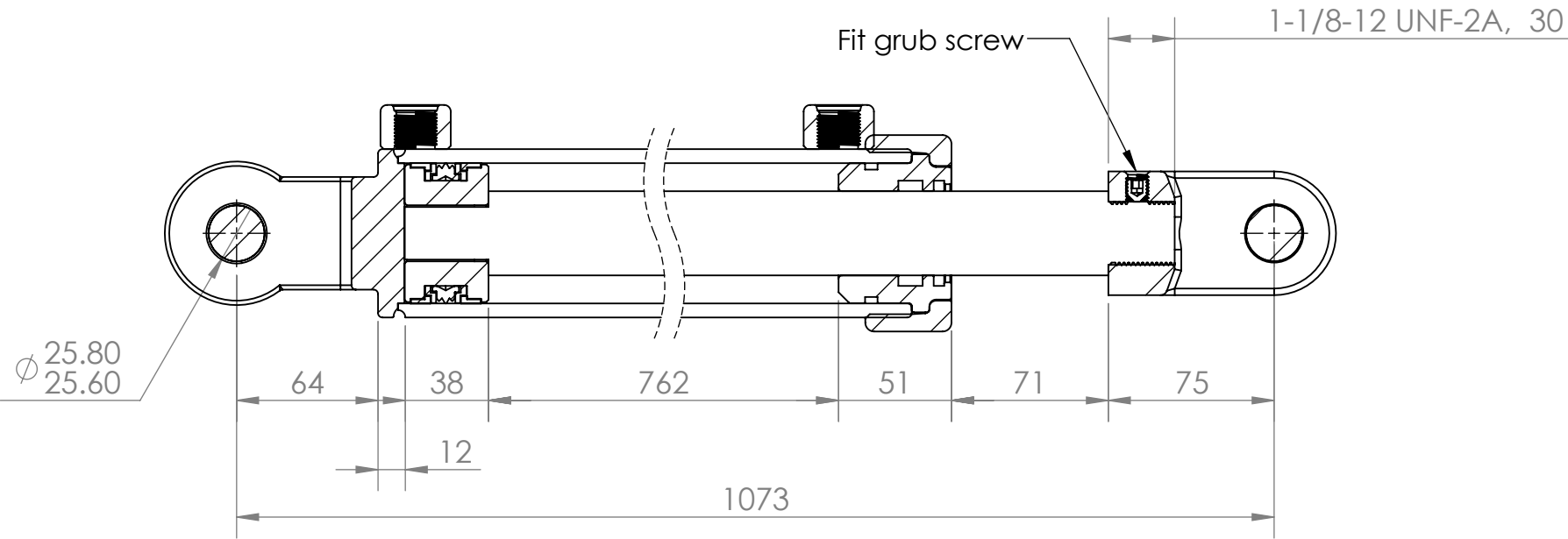
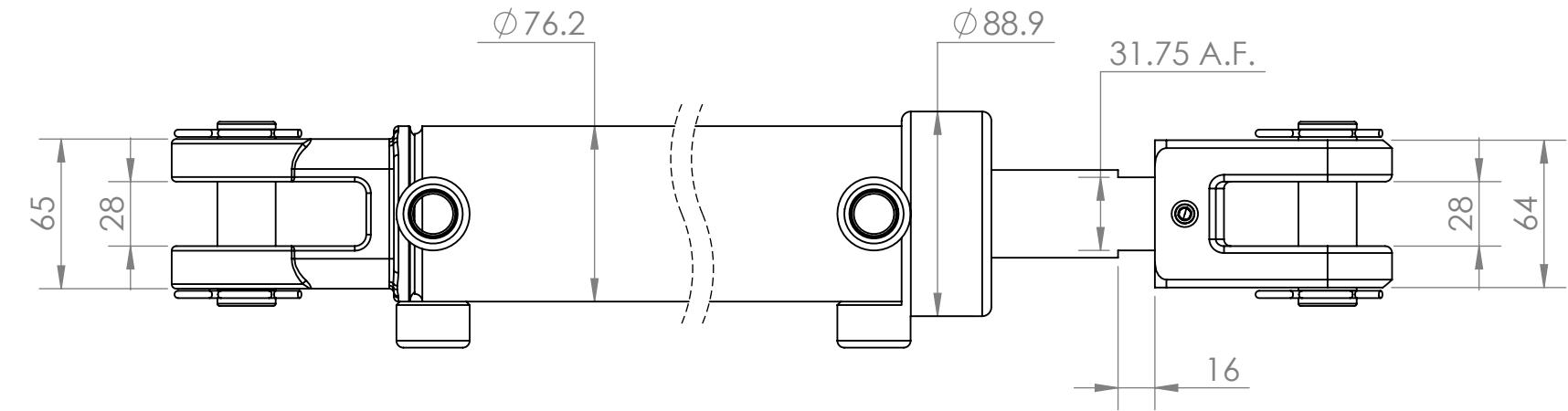
Stamping Type:	Pin	
MOTUS	XXXXX	"X" Refers to MOTUS 5 digit build number
MHU25015030-DP	Customer stamping text (if applicable)	

Company:	C&M	
Cylinder Name: (if applicable)	MHU25015030-DP	
Cylinder Type:	Ultra	DA
Operating Pressure:	4000 PSI	
Safety Rating:	2.5 : 1	
Weight:	23.63	kg

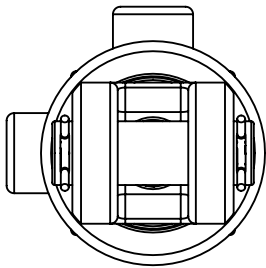
Motus Decal:	Yes	
Paint/Finish:	Gloss Black	
Seal Kit :	6106840	

Bore Dia / Finished Length	Ø 2.5"	836	mm
Wall Thickness :	1/4		
Shaft Dia / Finished Length	Ø 1.5"	952	mm
Material :	1045		
Piston Thread Details:	Ø 1"	38	mm

BASE	SPEAR
Mount: Clevis Base 1" Pin x 28 Gap CL10 Part No: 6006401	Mount: Threaded Clevis CL10-28-75 1-1/8" Thread Part No: 6006401
Pin Size Ø : 1"	Pin Size Ø : 1"
Bush Type: - L Bore: No	Bush Type: - L Bore: No
Bush Size: -	Bush Size: -
Base Bearing: -	Shaft Bearing : -
Grease Nipple: N/A	Grease Nipple: N/A
Port: -8 UNO 3/4 (x2)	Port: -8 UNO 3/4 (x2)
Orientation: 0 & 90	Orientation: 0 & 90
Drill Size: 7 mm	Drill Size: 7 mm
Drill Distance: 8 mm	Drill Distance: 44 mm



Base View



Front View

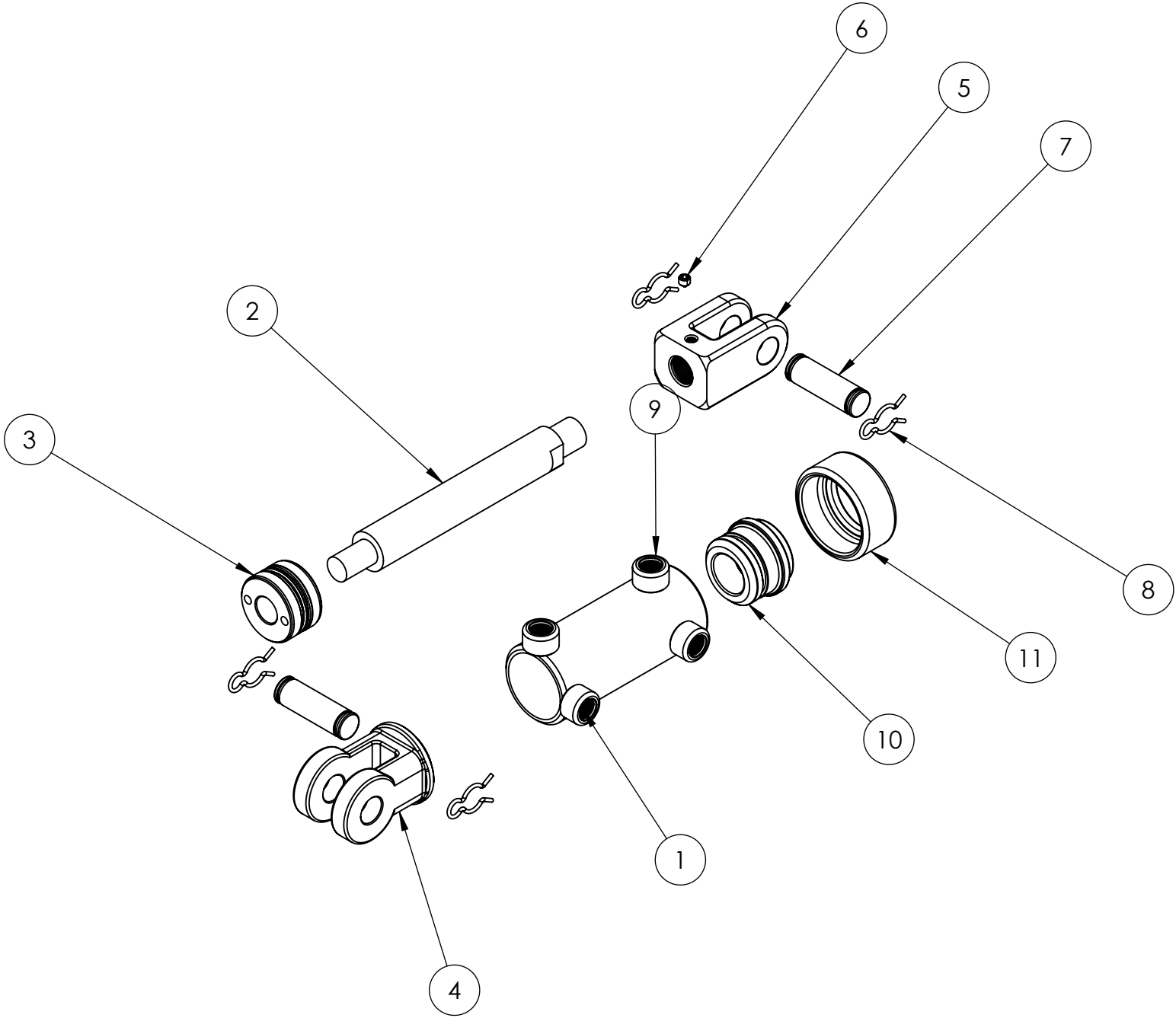
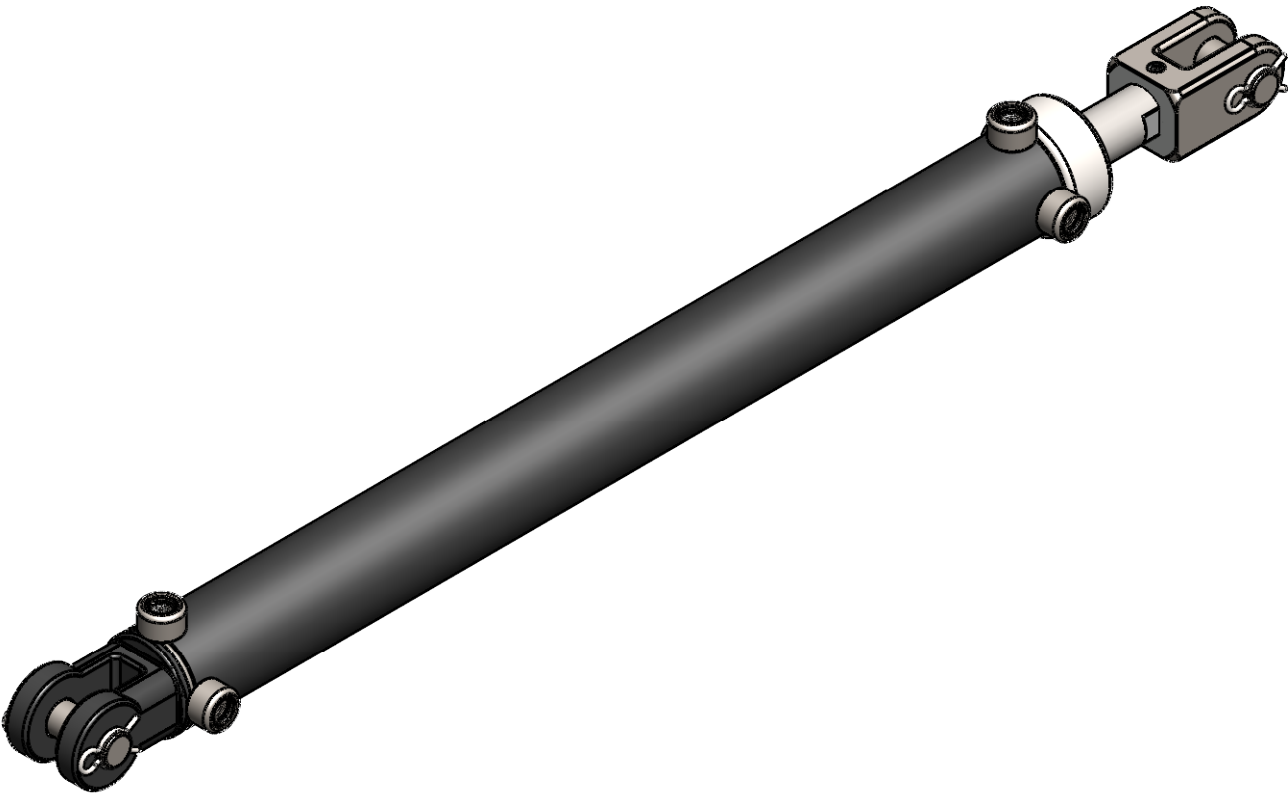
BUILD NUMBER:	
Sales Order Number:	
Invoice Number:	
Customer Order Number:	
Order Date:	
Date of Dispatch:	
Quantity:	
Multiple order:	of:

Drawing Approval (Customer)		
Name:	Signature:	Date:

Stroke :	762	±3 mm
Closed Centres :	1073	±3 mm
Open Centres :	1835	±3 mm

Special Instructions:
Include 1" Pins (x2) and clips (x4)
Fit metal plugs in ports

ITEM NO.	PART NUMBER	DESCRIPTION	QTY.
1	BR2.5	MH250150 BARREL	1
2	SP1.5	MH250150 SHAFT	1
3	6006221-1	WR250 Piston	1
4	6006401	BCLC1.0x28x76	1
5	6007510	CL1.0-28-75 Threaded Clevis-1-1/8" UNF	1
6	9009427	3/8 UNF Grub Screw	1
7	6007086	1.0x80 ZP pin	2
8	6006720	Clip to suit 1" Pin	4
9	6006854-1	PFM 3/4 -8 UN O-RING PORT	4
10	6006175	2.5 x 1.5 Ultra Head	1
11	6006177	2.5" Ultra Cap	1



Note:

- All imperial threads are machined to 2A, 2B specification
- All metric threads are machined to 6g, 6H specification
- All pin holes machined to D9 tolerance unless specified otherwise
- All machine surface finishes are 3.2µm Ra
- Close/Open centres to ±3mm tolerance

1	Initial release	09-01-2023	TQ	-
REV.	DESCRIPTION	DATE	DRAWN	APPROVED
REVISIONS				